

## Anti-Human CD73, PE

Please read the datasheet carefully prior to use.

Cat. No. HF102

Version No. Version 2.0

Storage: at 2-8°C in dark for one year, don't freeze

### Description

CD73 is a 70 kD homodimer consisting of 2 identical subunits anchored externally to the cell surface by a glycosyl phosphatidyl inositol (GPI). It can hydrolyze Adenosine monophosphate (AMP) into adenosine. CD73 is expressed in T lymphocytes, B lymphocytes, mesenchymal stem cells, foaming tree dendritic cells, endothelial cells, and epithelial cell sub-groups, which costimulate the activation of T cells and regulates the adhesion of lymphocytes and endothelial cells. CD73, as a marker of lymphocyte differentiation, is attenuated in some immunodeficiency diseases. According to research reports, CD73 is a potential biomarker, which is closely related to the adverse prognosis of various types of tumors. After purification of CD73 monoclonal antibody by affinity chromatography, the antibodies were conjugated with fluorescein PE under optimal conditions and used for flow cytometric detection of CD73 on cell surface.

### Product Information

Specificity: Human

Host Species: Mouse

Antibody Type: Monoclonal

Clone Number: Trans-1H4

Antibody Subtype: Mouse IgG1,  $\kappa$

Label: PE (Ex: 488-561 nm; Em: 578 nm)

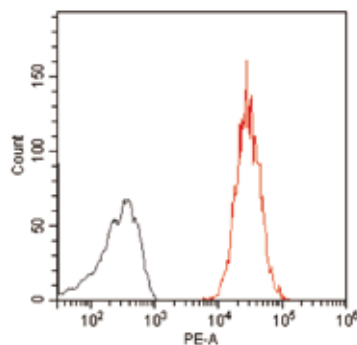
Stock Solution: Phosphate buffered saline (pH 7.2) containing 1% BSA and 0.05% ProClin 300

### Kit Contents

| Component           | HF102-01 | HF102-02 |
|---------------------|----------|----------|
| Anti-Human CD73, PE | 25 tests | 50 tests |

### Applications

For flow cytometric staining, the recommended dosage is 5  $\mu$ l antibody per  $1 \times 10^6$  cells and the staining volume is 100  $\mu$ l; Or staining with 5  $\mu$ l antibody per 100  $\mu$ l whole blood.



Human mesenchymal stem cells were stained with PE Mouse IgG1,  $\kappa$  Isotype Ctrl (grey line) or Anti-Human CD73, PE (red line).

### Notes

- As the optimal concentration of flow cytometric antibody is affected by the number of cells, staining temperature, staining time and other factors, it is recommended that customers optimize titration before formal experiment to obtain the best results.
- For your health, please wear gloves and standardize the experiment operation.



#### Related Products

| <b>Cat. No.</b> | <b>Product Name</b>            | <b>Specification</b> |
|-----------------|--------------------------------|----------------------|
| FB103-01        | Staining Buffer (1×)           | 500 ml               |
| FG701-01        | PBS (1×)                       | 500 ml               |
| HF121-01/02     | Anti-Human CD45, FITC          | 25T/50T              |
| HF125-01/02     | Anti-Human CD45, PerCP-Cy5.5   | 25T/50T              |
| HF101-01/02     | Anti-Human CD73, FITC          | 25T/50T              |
| HF104-01/02     | Anti-Human CD73, APC           | 25T/50T              |
| HF134-01/02     | Anti-Human CD90, APC           | 25T/50T              |
| HF111-01/02     | Anti-Human CD105, FITC         | 25T/50T              |
| HF112-01/02     | Anti-Human CD105, PE           | 25T/50T              |
| HF114-01/02     | Anti-Human CD105, APC          | 25T/50T              |
| HF001           | Human MSC Characterization Kit | 25T/50T              |

For more flow cytometric antibody products, please refer to the official website ( <https://www.transgenbiotech.com/> ) or call for consultation.

FOR RESEARCH USE ONLY

