

ProteinEle[®] Precast Tris-Glycine Gel

Cat. No. DG101

Storage: at 2-8°C for one year

Description

ProteinEle[®] Precast Tris-Glycine Gel is a 4-15% continuous gradient polyacrylamide precast gel formulated with a neutral pH buffer system, showing high resolution and good stability. This product is suitable for separation of native and denatured proteins by electrophoresis. It is easy to use and simple to install, and fits mini gel tanks which are popular and widely used.

Highlights

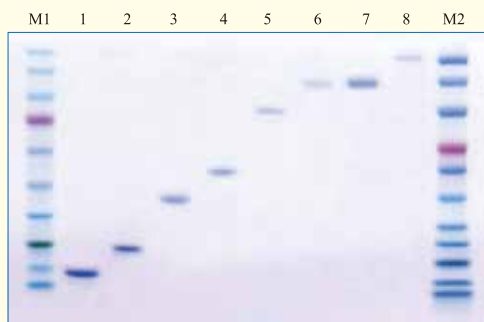
- High resolution
- Long shelf life

Specifications

Amount	10 Pieces/Box
Gel material	Polyacrylamide
Polyacrylamide percentage	4-15%
Gel thickness	1 mm
Well format	12 wells
Cassette size (W×L)	10×8.3 cm

Procedures

- Cut open the outer package to get the gel cassette, remove the sealing tape at the bottom, and place it in the gel tank.
- Add the Tris-Glycine electrophoresis buffer to immerse the comb, gently pull out the comb, and load samples and ladders.
- Remove the gel sandwich after electrophoresis, and pry the two plastic gel plates apart using a tweezer or a small screwdriver to transfer the gel.



ProteinEle[®] Precast Tris-Glycine Gel (5 µl/well)

FOR RESEARCH USE ONLY