

Anti-Human CD3, FITC

Please read the datasheet carefully prior to use.

Cat. No. HF151

Version No. Version 2.0

Storage: at 2-8°C for one year in the dark, do not freeze.

Description

CD3 is a protein complex composed of five peptide chains (CD3 γ , CD3 δ , CD3 ϵ , CD3 η , CD3 ζ), and mainly expressed in all mature T cells, NKT cells, and some thymocytes. It is a member of the immunoglobulin superfamily that plays a role in antigen recognition, signal transduction, and T cell activation by binding to the T-cell receptor (TCR). Trans-1A5 monoclonal antibody specifically recognizes CD3 ϵ chain in CD3/TCR complex, which can be used for the activation and expansion of T cells. After purification of Trans-1A5 monoclonal antibody by affinity chromatography, the antibodies were conjugated with fluorescein FITC under optimal conditions and used for flow cytometric detection of CD3 on cell surface.

Product Information

Specificity: Human

Host Species: Mouse

Antibody Type: Monoclonal

Clone Number: Trans-1A5

Antibody Subtype: Mouse IgG2a, κ

Label: FITC (Ex: 488 nm; Em: 520 nm)

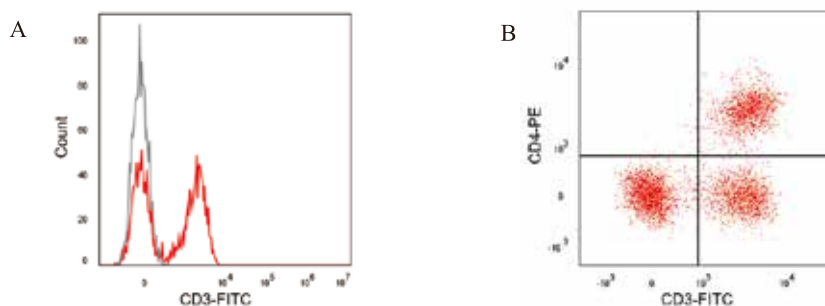
Stock Solution: Phosphate buffered saline (pH 7.2) containing 1% BSA and 0.05% ProClin 300

Kit Contents

Component	HF151-01	HF151-02
Anti-Human CD3, FITC	25 tests	50 tests

Applications

For flow cytometric staining, the recommended dosage is 5 μ l antibody per 1×10^6 cells, and the staining volume is 100 μ l. Or staining with 5 μ l antibody per 100 μ l whole blood.



A: Human peripheral blood lymphocytes were stained with FITC Mouse IgG2a, κ Isotype Ctrl (gray line) or Anti-Human CD3, FITC (red line), respectively.

B: Human peripheral blood lymphocytes were co-stained with Anti-Human CD3, FITC and Anti-Human CD4, PE (TransGen, Cat: HF142).

Notes

- As the optimal concentration of flow cytometric antibody is affected by the number of cells, staining temperature, staining time and other factors, it is recommended that customers optimize titration before formal experiment to obtain the best results.
- For your health, please wear gloves and standardize the experiment operation.



Related Products

Cat. No.	Product Name	Specification
FB101-01	RBC Lysis Buffer (1×)	100 ml
FB102-02	Human Peripheral Blood Lymphocyte Separation Solution	200 ml
FB103-01	Staining Buffer (1×)	500 ml
FB104-01	Permeabilization Buffer (10×)	100 ml
FG701-01	PBS (1×)	500 ml
HF121-01/02	Anti-Human CD45, FITC	25T/50T
HF125-01/02	Anti-Human CD45, PerCP-Cy5.5	25T/50T
HF152-01/02	Anti-Human CD3, PE	25T/50T
HF154-01/02	Anti-Human CD3, APC	25T/50T
HF141-01/02	Anti-Human CD4, FITC	25T/50T
HF142-01/02	Anti-Human CD4, PE	25T/50T
HF144-01/02	Anti-Human CD4, APC	25T/50T
HF161-01/02	Anti-Human CD8a, FITC	25T/50T
HF162-01/02	Anti-Human CD8a, PE	25T/50T
HF164-01/02	Anti-Human CD8a, APC	25T/50T
HF171-01/02	Anti-Human IFN- γ , FITC	25T/50T
HF172-01/02	Anti-Human IFN- γ , PE	25T/50T
HF174-01/02	Anti-Human IFN- γ , APC	25T/50T

For more flow cytometric antibody products, please refer to the official website(<https://www.transgenbiotech.com/>) or call for consultation.

For research use only, not for clinical diagnosis.

Service telephone +86-10-57815020

Service email complaints@transgen.com

