

ProteinFind® Anti- β -Tubulin Mouse Monoclonal Antibody

Cat. No. HC101

Storage: at 2-8°C for one month, at -20°C for one year

Description

Tubulin is an important component of the cytoskeleton. It is widely present in various mammalian cells and mainly consists of α -tubulin and β -tubulin. The expression level of β -tubulin is relatively stable. It is widely used as expression control.

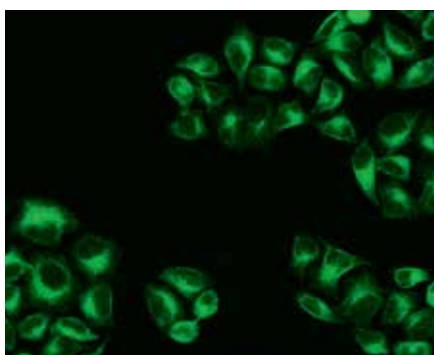
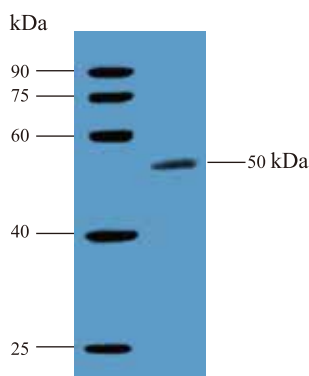
ProteinFind® Anti- β -Tubulin Mouse Monoclonal Antibody is a purified monoclonal antibody that detects β -Tubulin in human, rat, mouse, goat and other species.

Suggested Dilution

- Western Blot: 1:500-10000 dilution.
- ELISA: 1:500-5000 dilution.
- IF: 1:100-500 dilution.
- IP: 1:100-500 dilution.

Notes

- Aliquot prior to use, and avoid repeated freezing and thawing.
- Diluted antibody should be used within 12 hours.



M: EasySee® Western Marker

Detection of β -Tubulin protein expression in HEK-293 cell by WB and IF

For research use only, not for clinical diagnosis.

Service telephone +86-10-57815020

Service email complaints@transgen.com

