

## Anti-Human CD105, PE

Please read the datasheet carefully prior to use.

Cat. No. HF112

Version No. Version 2.0

Storage: at 2-8°C for one year in the dark, do not freeze.

### Description

CD105, also known as Endoglin, is a type I transmembrane protein located on the cell surface, consisting of homodimers with a molecular weight of about 90 kD. CD105, one of the TGF- $\beta$  receptor complexes, highly binds TGF- $\beta$ 1 and  $\beta$ 3, but does not bind to  $\beta$ 2. CD105 is highly expressed in vascular endothelial cells and is a molecular marker of tumor angiogenesis. In addition, CD105 is also expressed on the surface of activated monocytes and macrophages. After purification of CD105 monoclonal antibody by affinity chromatography, the antibodies were conjugated with fluorescein PE under optimal conditions and used for flow cytometric detection of CD105 on cell surface.

### Product Information

Specificity: Human

Host Species: Mouse

Antibody Type: Monoclonal

Clone Number: Trans-7B2

Antibody Subtype: Mouse IgG1,  $\kappa$

Label: PE (Ex: 488-561 nm; Em: 578 nm)

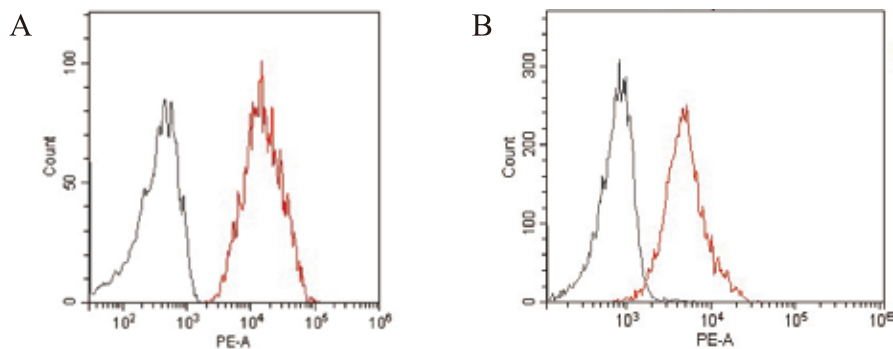
Stock Solution: Phosphate buffered saline (pH 7.2) containing 1% BSA and 0.05% ProClin 300

### Kit Contents

Component	HF112-01	HF112-02
Anti-Human CD105, PE	25 tests	50 tests

### Applications

For flow cytometric staining, the recommended dosage is 5  $\mu$ l antibody per  $1 \times 10^6$  cells, and the staining volume is 100  $\mu$ l. Or staining with 5  $\mu$ l antibody per 100  $\mu$ l whole blood.



A. Human mesenchymal stem cells were stained with PE Mouse IgG1,  $\kappa$  Isotype Ctrl (gray line) or Anti-Human CD105, PE (red line), respectively.

B. Human histiocytic lymphoma cells (U937) were stained with PE Mouse IgG1,  $\kappa$  Isotype Ctrl (gray line) or Anti-Human CD105, PE (red line), respectively.

### Notes

- As the optimal concentration of flow cytometric antibody is affected by the number of cells, staining temperature, staining time and other factors, it is recommended that customers optimize titration before formal experiment to obtain the best experimental results.
- For your health, please wear gloves and standardize the experiment operation.



#### Related Products

Cat. No.	Product Name	Specification
FB103-01	Staining Buffer (1×)	500 ml
FG701-01	PBS (1×)	500 ml
HF121-01/02	Anti-Human CD45, FITC	25T/50T
HF125-01/02	Anti-Human CD45, PerCP-Cy5.5	25T/50T
HF101-01/02	Anti-Human CD73, FITC	25T/50T
HF102-01/02	Anti-Human CD73, PE	25T/50T
HF104-01/02	Anti-Human CD73, APC	25T/50T
HF134-01/02	Anti-Human CD90, APC	25T/50T
HF111-01/02	Anti-Human CD105, FITC	25T/50T
HF114-01/02	Anti-Human CD105, APC	25T/50T
HF001	Human MSC Characterization Kit	25T/50T

For more flow cytometric antibody products, please refer to the official website( <https://www.transgenbiotech.com/> ) or call for consultation.

FOR RESEARCH USE ONLY

