

## Trans2K<sup>®</sup> DNA Marker

Cat.No. BM101

Storage: at 2-8°C for six months; at -20°C for two years

Concentration: 0.07 mg/ml

### Description

Trans2K<sup>®</sup> DNA Marker is a premixed, ready-to-load molecular weight marker containing eight linear double-stranded DNA fragments. The DNA Ladder is suitable for use as molecular weight standards for agarose gel electrophoresis. The DNA Ladder contains 100 bp -2.0 kb DNA fragments. The 750 bp band (100 ng/5  $\mu$ l) has doubled intensity than other bands to serve as reference band.

### Highlights

- Ready-to use molecular weight marker for DNA size range of 100 bp to 2.0 kb.
- All bands from restriction enzyme digested plasmids.
- Brighter 750 bp reference band.

### Composition

100 bp, 250 bp, 500 bp, 750 bp (100 ng/5  $\mu$ l, the double intensity band), 1,000 bp, 2,000 bp

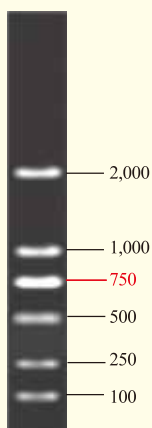
### Storage Buffer

10 mM Tris-HCl (pH 8.4), 10 mM EDTA, 0.02% bromophenol blue, 5% glycerol

### Notes

- In general, we recommend to use 1  $\mu$ l Trans2K<sup>®</sup> DNA Marker per mm of gel lane, or 5  $\mu$ l per gel lane.
- The Trans2K<sup>®</sup> DNA Marker is not intended for precise quantification of DNA mass but can be used for estimating the molecular weight of linear, double-stranded DNA fragments.
- Do not use the Trans2K<sup>®</sup> DNA Marker with polyacrylamide gels.
- For long term storage, store at -20°C. If stored at -20°C, mix well after thawing.

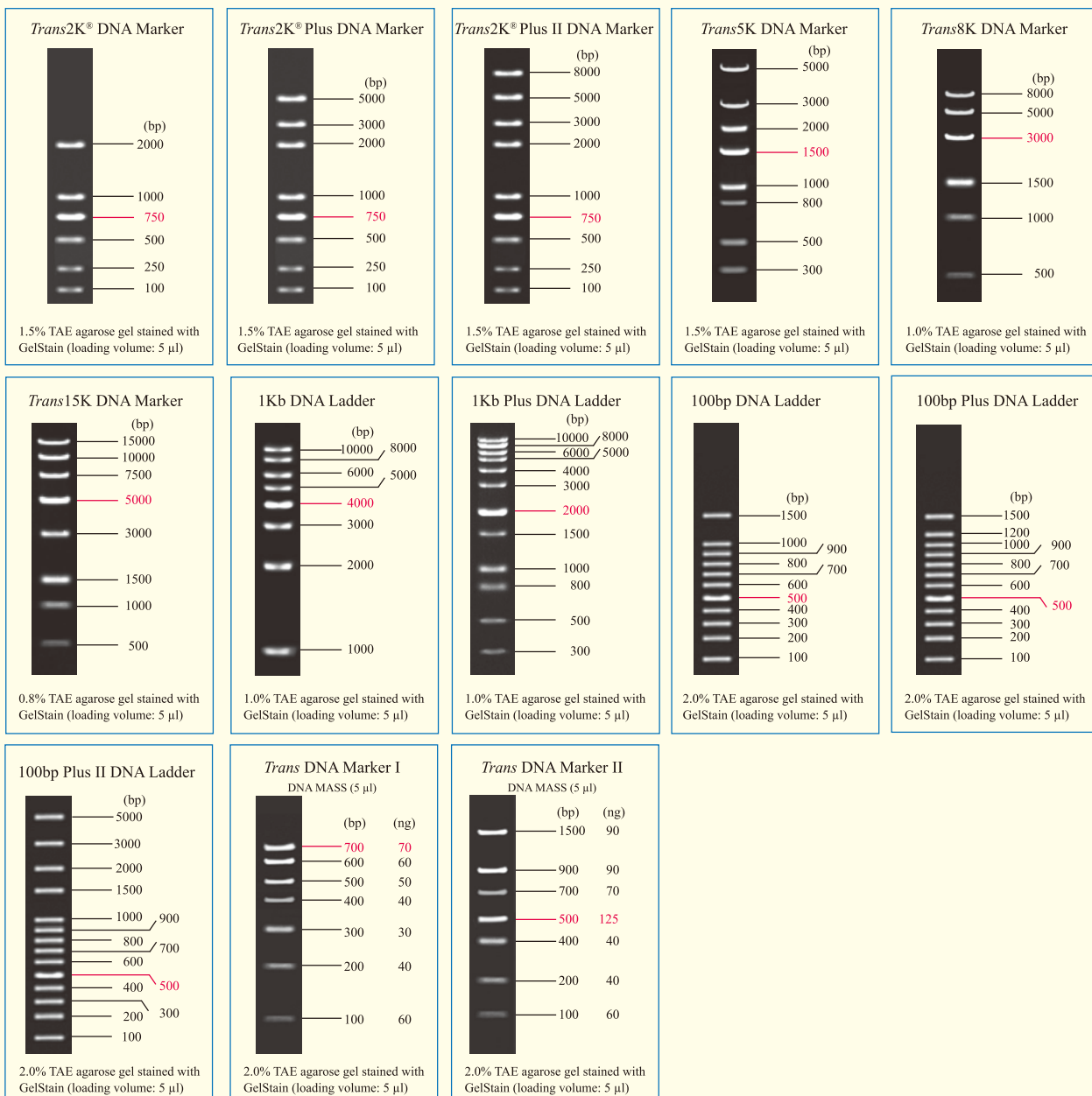
Trans2K<sup>®</sup> DNA Marker (5  $\mu$ l)



1.5% TAE agarose gel stained with GelStain  
(loading volume: 5  $\mu$ l)

## Recommend Agarose Gel Percentages for Trans DNA Markers

DNA Marker	Agarose	DNA Marker	Agarose
<i>Trans2K</i> <sup>®</sup> DNA Marker	1.5%	1Kb DNA Ladder	1.0%
<i>Trans2K</i> <sup>®</sup> Plus DNA Marker	1.5%	1Kb Plus DNA Ladder	1.0%
<i>Trans2K</i> <sup>®</sup> Plus II DNA Marker	1.5%	100bp DNA Ladder	2.0%
<i>Trans5K</i> DNA Marker	1.5%	100bp Plus DNA Ladder	2.0%
<i>Trans8K</i> DNA Marker	1.0%	100bp Plus II DNA Ladder	2.0%
<i>Trans15K</i> DNA Marker	0.8%	<i>Trans</i> DNA Marker I	2.0%
		<i>Trans</i> DNA Marker II	2.0%



FOR RESEARCH USE ONLY