

## 100bp Plus DNA Ladder

Cat.No. BM311

**Storage:** at 2-8°C for six months; at -20°C for two years

**Concentration:** 0.13 mg/ml

### Description

100bp Plus DNA Ladder is a premixed, ready-to-load molecular weight marker containing eight linear double-stranded DNA fragments. The DNA Ladder is suitable for use as molecular weight standards for agarose gel electrophoresis. The DNA Ladder contains 100 bp -1.5 kb DNA fragments. The 500 bp band (100 ng/5  $\mu$ l) has doubled intensity than other bands to serve as reference 100 bp-1500 bp.

### Highlights

- Ready-to use molecular weight marker for DNA size range of 100 bp to 1.5 bp kb.
- All bands from restriction enzyme digested plasmids.
- Brighter 500 bp reference band

### Composition

100 bp, 200 bp, 300 bp, 400 bp, **500** bp, 600 bp, 700 bp, 800 bp, 900 bp, 1,000 bp, 1,200 bp, 1,500 bp

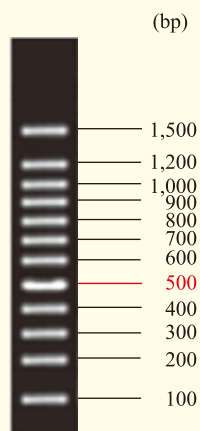
### Storage Buffer

10 mM Tris-HCl (pH 8.4), 10 mM EDTA, 0.02% bromophenol blue, 5% glycerol

### Notes

- In general, we recommend to use 1  $\mu$ l 100bp Plus DNA Ladder per mm of gel lane, or 5  $\mu$ l per gel lane.
- The 100bp Plus DNA Ladder is not intended for precise quantification of DNA mass but can be used for estimating the molecular weight of linear, double-stranded DNA fragments.
- Do not use the 100bp Plus DNA Ladder with polyacrylamide gels.
- For long term storage, store at -20°C. If stored at -20°C, mix well after thawing.

100bp Plus DNA Ladder (5  $\mu$ l)



2.0% TAE agarose gel stained with GelStain  
(loading volume: 5  $\mu$ l)

FOR RESEARCH USE ONLY