

## *ProteinFind*<sup>®</sup> Anti- $\beta$ -Tubulin Mouse Monoclonal Antibody

Cat. No. HC101

**Storage:** at 2-8°C for one month, at -20°C for one year

### Description

Tubulin is an important component of the cytoskeleton. It is widely present in various mammalian cells and mainly consists of  $\alpha$ -tubulin and  $\beta$ -tubulin. The expression level of  $\beta$ -tubulin is relatively stable. It is widely used as expression control.

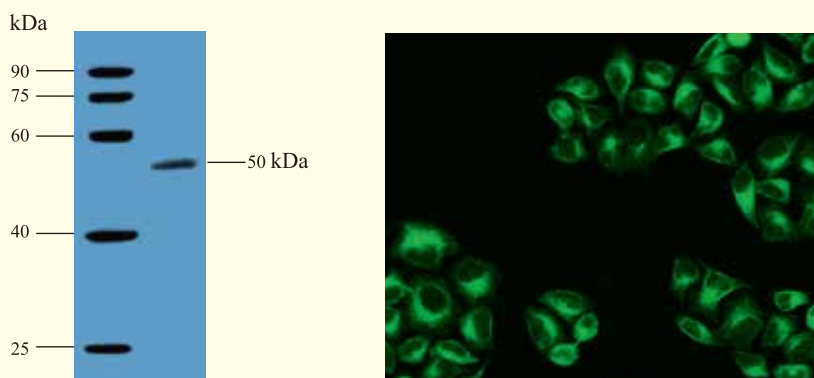
*ProteinFind*<sup>®</sup> Anti- $\beta$ -Tubulin Mouse Monoclonal Antibody is a purified monoclonal antibody that detects  $\beta$ -Tubulin in human, rat, mouse, goat and other species.

### Suggested Dilution

- Western Blot: 1:500-10000 dilution.
- ELISA: 1:500-5000 dilution.
- IF: 1:100-500 dilution.
- IP: 1:100-500 dilution.

### Notes

- Aliquot prior to use, and avoid repeated freezing and thawing.
- Diluted antibody should be used within 12 hours.



M: *EasySee*<sup>®</sup> Western Marker

Detection of  $\beta$ -Tubulin protein expression in HEK-293 cell by WB and IF

FOR RESEARCH USE ONLY